



Јавно предузеће  
"ВОДОВОД И КАНАЛИЗАЦИЈА"  
ЛОЗНИЦА



Лозница, 13.04.2016.год.  
Управа: Георгија Јакшића бр. 9.  
Тел.015-7884-660;7882-430  
Поштански фах 19  
Email: [javne.nabavke@vikloznica.rs](mailto:javne.nabavke@vikloznica.rs)  
Служба одржавања:1.Маја б.б..  
Тел.015-872-028  
Црпна станица:Б.Ковиљача  
Тел.015-818-162  
Текући рачун код Banca Intesa:  
160-7130-26  
Матични број: 07168861  
ПИБ:101188448

Наш знак: Д-4/2016  
Ваш знак:

**ПРЕДМЕТ: Одговор на питање понуђача од 13.04.2016.**

Питање понуђача:

Како бисмо Вам доставили адекватну понуду, молимо Вас за појашњење које спроводно коло Вам треба за Lowara пумпе?

Молимо да погледате прву слику у каталогу да ли се тражи позиција 15, 16 или 33?

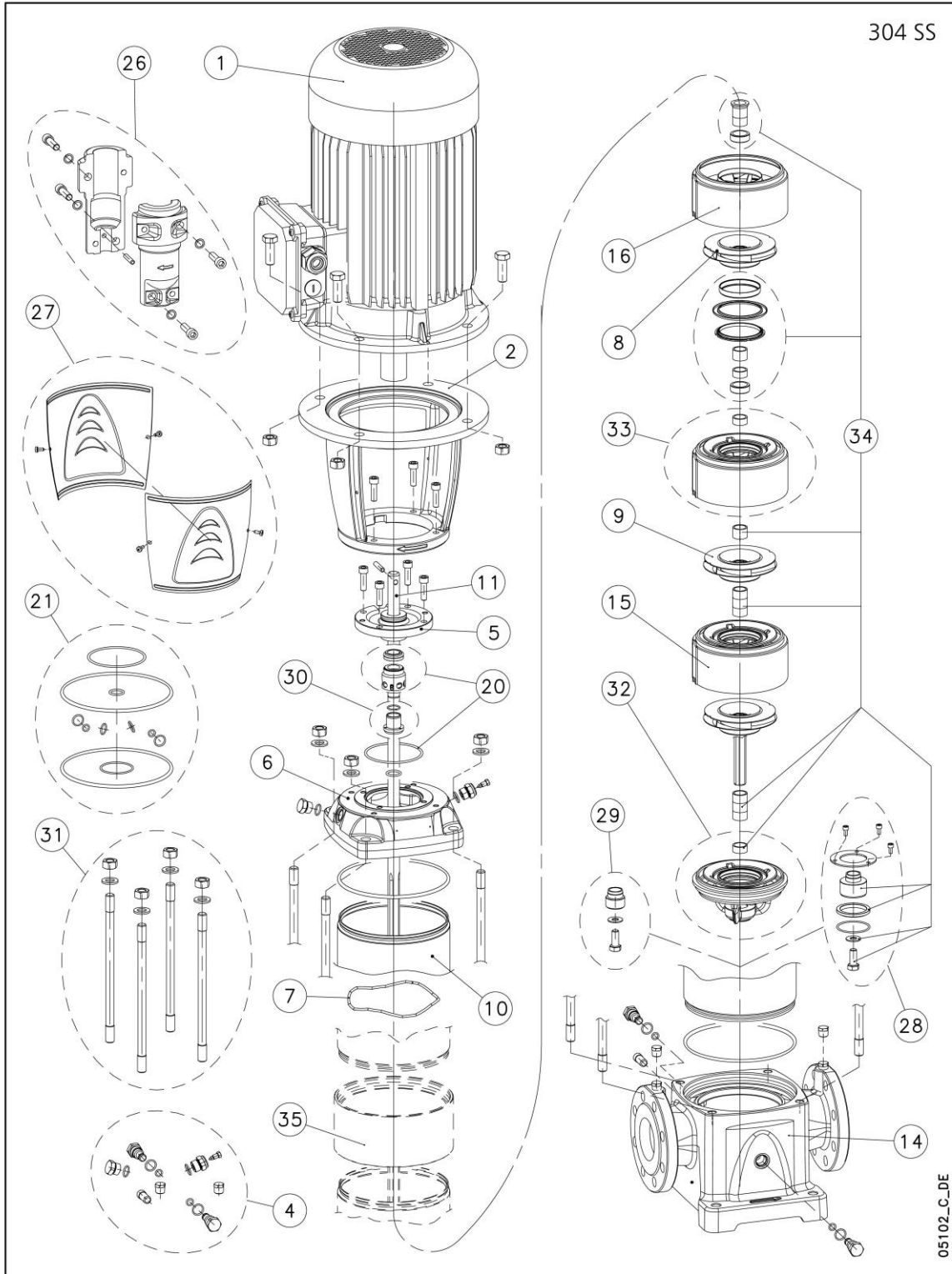
Јер сте Ви у техничкој спецификацији само навели ознаке пумпе, а не и ознаке дела који Вам је неопходан.



# ITT

**SV33-92 - GSV33-92 - PX33-92 - 65-100CLM**

304 SS



05102\_C\_DE



N.	Descrizione It	Description en	Description fr	Beschreibung de	Descripción es	Descrição pt
1	Motore	Motor	Moteur	Motor	Motor	Motor
2	Lanterna	Adaptor	Lanterne	Passfeder	Adaptador	Adaptador
4	Tappi	Plugs	Bouchons	Schrauben	Tapones	Tampões
5	Disco porta tenuta	Seal housing plate	Disque de support garniture	Dichtungsgehäusescheibe	Disco de alojamiento sello	Disco porta-vedante
6	Testata superiore	Upper head	Tête supérieure	Oberer Zylinderkopf	Cabezal superior	Cabeça superior
7	Molla	Spring	Ressort	Feder	Muelle	Mola
8	Girante ridotta	Reduced impeller	Roue réduite	Lauftrad, reduziertes	Rodete, reducido	Impulsor reduzido
9	Girante piena	Full impeller	Roue pleine	Volles Lauftrad	Rodete, completo	Impulsor completo
10	Camicia	Sleeve	Chemise	Gehäuse	Camisa	Camisa
11	Albero	Shaft	Arbre	Welle	Árbol	Veio
14	Corpo pompa	Pump body	Corps de pompe	Pumpengehäuse	Caja bomba	Corpo da bomba
15	Diffusore boccola carbone	Diffuser carbon bush	Diffuseur douille carbone	Diffusor und Büchse, Kohle	Difusor casquillo carbón	Difusor bucha carvão
16	Diffusore finale	Last stage diffuser	Diffuseur dernier étage	End Diffusor	Difusor final	Difusor final
20	Kit tenuta mecc. + OR	Mechanical seal + OR kit	Kit garniture mec. + joints toriques	Gleitringdichtung + OR	Kit sello mec. + junta tórica	Kit vedante mec. + OR
21	Kit guarnizioni OR	O ring kit	Kit joints toriques	O-Ring-Dichtungssatz	Kit juntas tóricas	Kit guarnições OR
26	Kit coppia di semigiunti	Pair of half coupling kit	Kit paire de demi-manchons	Kupplungssatz	Kit par de semijuntas	Kit par de semi-juntas
27	Kit protezione giunto	Coupling guard kit	Kit protection manchon	Satz Kupplungsschutz	Kit protección junta	Kit protecção junta
28	Kit tamburo reggispinta	Thrust drum kit	Kit tambour butée	Satz Drucklagerscheibe	Kit tambor de empuje	Kit tambor de impulso
29	Kit bloccaggio giranti	Impeller locking kit	Kit blocage roues	Laufaderblockierungssatz	Kit bloqueo rodetes	Kit bloqueio impulsores
30	Kit bussola tenuta	Bush seal kit	Kit douille garniture	Satz Buschdichtung	Kit casquillo sello	Kit bucha vedante
31	Kit tiranti	Tie rods kit	Kit tirants	Zugstangensatz	Kit tirantes	Kit tirantes
32	Kit supporto boccola Widia	Support tungsten bush kit	Kit support douille Widia	Satz Widia Halterung	Kit soporte casquillo Widia	Kit suporte com tungstênio bucha
33	Kit diffusore boccola Widia	Diffuser tungsten bush kit	Kit diffuseur douille Widia	Satz Diffusor mit Widia Büchse	Kit difusor casquillo Widia	Kit difusor com tungstênio bucha
34	Kit parti di usura	Wear parts kit	Kit parties d'usure	Bausatz Verschleißteile	Kit piezas de desgaste	Kit peças desgastáveis
35	Anello per camicie	Sleeve ring	Anneau pour chemises	Ring für Laufbuchsen	Anillo para camisas	Anel para camisas
N.	Beschrijving nl	Περιγραφή el	Açıklama tr	Kuvaus fi	Описание ru	Opis pl
1	Motor	Μηχης κινητήρας	Motor	Moottori	Двигатель	Silnik
2	Lantaarnstuk	Μπρακέτο	Adaptör	Sovitin	Крестовина	Piasta
4	Pluggen	Σετ ταπιών	Tapalar	Tulpat	Пробки	Zatycki
5	Dichtingssteenplaat	Δίσκος μηχανικού στυποθλίπτη	Sızdırmazlık elemanı diski	Tiivisteennannatuslevy	Пластина держателя прокладки	Tarcza uszczelki
6	Bovenste kop	Κεφαλή αντλίας	Üst kafa	Yläkansi	Верхняя головка	Głowica górna
7	Veer	Έλασμα	Yay	Jousi	Пружина	Sprężyna
8	Waaier met verkleinde diameter	Πτερόγιο μειωμένης διαμέτρου	Küçük boyulu pompa rotoru	Pieni juoksupyörä	Уменьшенное рабочее колесо	Wirnik niepełny
9	Volle waaier	Πτερόγιο πλήρους διαμέτρου	Tam boyulu pompa rotoru	Täydellinen juoksupyörä	Полное рабочее колесо	Wirnik pełny
10	Mantel	Κέλυφος	Gömlek	Muhvi	Муфта	Plaszcz
11	As	Άξονας	Mil	Akseli	Вал	Wał
14	Pomphuis	Σώμα αντλίας	Pompa gövdesi	Pumpun runko	Корпус насоса	Korpus pompy
15	Diffusor koollager	Πτερόγιο εκτροπής με κοιλνέτο	Karbon burçlu difüzör	Diffusori ja hiiliholkki	Диффузор втулки угля	Dyfuzor tulejki węgla
16	Diffusor laatste trap	Τελευταίο πτερόγιο εκτροπής	Son difüzör	Loppuvaiheen diffuusori	Конечный диффузор	Dyfuzor końcowy
20	Set mech. asafidchtig + O-ring	Μηχανικός στυποθλίπτης και ροδέλες στεγανοποίησης	Mekanik salmastra kiti + O-Ring	Mek. tiiviste + O-rengassarja	Комплект мех.прокладки + OR	Zestaw uszcz.mech. + OR
21	Set O-ringafdichtingen	Σετ ροδέλες στεγανοποίησης	O-Ring kiti	O-rengassarja	Комплект кольцевых прокладок OR	Zestaw uszczelkek OR
26	Set koppelingshelften	Σετ σταθερού συνδέσμου	Çift yanım manşon kiti	Liitinsarja	Комплект пары полумуфт	Zestaw pary półzłączy
27	Set koppelingsbescherming	Καλύμματα προστασίας σταθερού συνδέσμου	Manşon koruma kiti	Liitoksen suojussarja	Комплект защиты муфт	Zestaw ochrony złączy
28	Set druklagertrammel	Σετ ωστικού εμβόλου	Basınç yatađı tambur kiti	Rumpusarja	Комплект упорного барабана	Testaw bębna łożyska oporowego
29	Set waaierblokkeringen	Σετ ασφάλισης πτερυγίων	Pompa rotorlarını sabitleme kiti	Juoksupyörien kiinnitysarja	Комплект блокировки раб. колес	Zestaw blokujący wirniki
30	Set afdichtingsbus	Σετ κοιλνέτου μηχανικού στυποθλίπτη	Sızdırmazlık elemanı burcu kiti	Holkki ja tiiviste	Комплект втулки уплотнения	Zestaw busoli uszczel.
31	Set trekstangen	Σετ ράβδων σύνδεσης	Gergi çubuđu kiti	Vetotankosarja	Комплект тяг	Zestaw napinaczy
32	Set Widia steunbus	Σετ κάτω κοιλνέτου	Tungsten burç mesnedi kiti	Kannatin ja kovametalliholkki	Комплект опоры втулки Widia	Zestaw wspornika tulejki Wolfram
33	Set Widia diffusorbus	Σετ πτερυγίου εκτροπής με κοιλνέτο και δακτύλιο τριβής	Tungsten burçlu difüzör kiti	Diffusori ja kovametalliholkki	Комплект диффузора втулки Widia	Zestaw dyfuzora tulejki Wolfram
34	Set slijtonderdelen	Σετ δακτύλιων τριβής	Aşınma parçalan kiti	Kulumosiosien sarja	Комплект изнашиваемых частей	Zestaw części podł. zużyciu
35	Ring voor mantels	Σύνδεσμος κελύφων	Gömlek halkası	Muhvirengas	Кольцо муфты	Pierścien do plaszczcy



Production date > Feb08

SV33F/P 2 Pole

ELP 2 P, 3 ~										
F - Version 3 ~ >	SV3301/1F	SV3301F/P	SV3302/2F/P	SV3302/1F/P	SV3302F/P	SV3303/2F/P	SV3303/1F/P	SV3303F/P	SV3304/2F/P	SV3304/1F/P
	102700011	101570021	101570031	101570041	101570051	101570061	101570071	101570081	101570091	101570101
3 ~ >	SV3304F/P	SV3305/2F/P	SV3305/1F/P	SV3305F/P	SV3306/2F/P	SV3306/1F/P	SV3306F/P	SV3307/2F/P	SV3307/1F/P	SV3307F/P
	101570111	101570121	101570131	101570141	101570151	101570161	101570171	101570181	101570191	101570201
3 ~ >	SV3308/2F/P	SV3308/1F/P	SV3308F/P	SV3309/2F/P	SV3309/1F/P	SV3309F/P	SV3310/2F/P	SV3310/1F	SV3310F	SV3311/2F
	101570211	101570221	101570231	101570241	101570251	101570261	101570271	102700281	102700291	102700301
Motor power kW >	SV3311/1F	SV3311F	SV3312/2F	SV3312/1F	SV3312F	SV3313/2F	SV3313/1F			
	102700311	102700321	102700331	102700341	102700351	102700361	102700371			
Stages Number	2,2	3,0	4,0	4,0	5,5	5,5	7,5	7,5	7,5	11,0
	11,0	11,0	11,0	15,0	15,0	15,0	15,0	15,0	18,5	18,5
	18,5	18,5	22,0	22,0	22,0	22,0	22,0	30,0	30,0	30,0
	30,0	30,0	30,0	30,0	30,0	30,0	30,0			
Stages Number	1	1	2	2	2	3	3	3	4	4
	4	5	5	5	6	6	6	7	7	7
	8	8	8	9	9	9	10	10	10	11
	11	11	12	12	12	13	13			

Single Unit and Kit

10	Stages >	1	2	3	4	5	6	7	8	9	10
Sleeve STD		11	12	13							
	166441881	166441891	166441901	166441911	166441921	166441931	166441941	166441951	166441961	166441971	
	KL13AAA	KL13AAB	KL13AAC	Note. Double Sleeve Kit are without ring							
Sleeve OPTION 316SS, PN40	156408600	156408610	156408620	156408630	156408640	156408650	156408660	156408670	156408680	156408690	
	KL13AAA	KL13AAB	KL13AAC	Note. Double Sleeve Kit are without ring							
11 Shaft 431 SS	165045621	165045631	165045641	165045651	165045661	165045671	165045681	165045691	165045701	165045711	
	165045721	165045731	165045741								
31 Tie rods kit SVF	KL22AAC	KL22AAD	KL22AAE	KL22AAF	KL22AAG	KL22AAH	KL22AAK	KL22AAL	KL22AAM	KL22AAN	
	KL22AAP	KL22AAQ	KL22AAR								

Mech seal Kit

*20	Materials ->	Q1BEGG	Q1Q1EGG	Q1BVG	Q1Q1VGG	Q1CTGG	Q1Q1TGG	
Mech seal D22 + OR		KL01AC0	KL01AC1	KL01AC2	KL01AC3	KL01AC5	KL01AC6	STD -> Q1BEGG - OR EPDM

Wear parts, pump body drum, impeller stop, impeller locking	->SV3304	->SV3305	->SV3309	->SV3313
	1 bearing no drum	2 bearing no drum	2 bearing drum	3 bearing drum
* 34 Wear Parts Kit	KL35AA9	KL35ABA	KL35ABB	KL35ABD
14 Pump body	PN16 PN25-40	151351000	151351000	151351020
28 Drum	EPDM	-	-	KL41AAA
	FPM	-	-	KL41AAD
	FEP	-	-	KL41AAS
29 Impeller locking	KL41AAG	KL41AAG	-	-

Common, Single Unit and Kit

4 Plugs	EPDM	KL34AAF	
	FPM	KL34AAG	
	FEP	KL34AAH	
5 Seal housing plate		160150260	
6 Upper head		161453740	
7 Spring		169100190	
*8 Reduced impeller		150702820	
*9 Full impeller		150702740	For example. SV3303/2 = 3 Stages = 3 Impellers: 2 Imp. Reduced, 1 Imp. Full
15 Diffuser carbon bush		152801801	304 SS
16 Last stage diffuser		152801731	304 SS
*21 OR	EPDM	KL02AAA	1-2 Sleeve With Elastomers for Drum Pumps SV33-46
	FPM	KL02AAD	
	FEP	KL02AA7	Single Sleeve With Elastomers for Drum Pumps SV33-46
	FPM	KL02AAE	
OR	FEP	KL02AA8	Double Sleeve With Elastomers for Drum Pumps SV33-46
30 Bush seal		KL41AAH	
32 Support tungsten bush SVF		KL16AAA	
*33 Diffuser tungsten bush		KL05AC6	From SV3304, incl.
35 Sleeve ring		168601900	For 11-12-13 Stages Pumps

Motor, Coupling, Adaptor

**1	kW >	2,2	3,0	4,0	5,5	7,5	11,0	15,0	18,5	22,0	30,0
Motor 2P, 3 ~>	107230220	50002RF00	50008VG00	50013VE00	50017V800	50019VE00	50024V800	50025V800	50026VE00	130643901	
Adaptor	161453600	161453620	161453620	161453640	161453640	161453660	161453660	161453660	161453660	161453680	
26 Coupling	KL10AAA	KL10AAB	KL10AAB	KL10AAC	KL10AAC	KL10AAD	KL10AAD	KL10AAD	KL10AAE	KL10AAF	
27 Coupling guard	KL33AAA	KL33AAA	KL33AAA	KL33AAB	KL33AAB	KL33AAC	KL33AAC	KL33AAC	KL33AAC	KL33AAC	



SV33F/P 4 Pole

Production date > Feb08

ELP 4 P, 3 ~											
F - Version	SV3303/2F4/P	SV3304/1F4/P	SV3305F4/P	SV3306F4/P	SV3307F4/P	SV3308F4/P	SV3309F4/P	SV3310F4/P	SV3311F4/P	SV3312F4/P	
3 ~ >	101570561	101570601	101570641	101570671	101570701	101570731	101570761	101570791	101570821	101570851	
	SV3313F4/P										
3 ~ >	101570881										
Motor power kW >	1,1	1,1	1,5	2,2	2,2	3,0	3,0	3,0	4,0	4,0	
Stages number	3	4	5	6	7	8	9	10	11	12	
	13										

Single Unit and Kit

10	Stages >	3	4	5	6	7	8	9	10	11	12
		13									
	Sleeve STD	166441901	166441911	166441921	166441931	166441941	166441951	166441961	166441971	KL13AAD	KL13AAE
		KL13AAF	Note. Double Sleeve Kit are without ring								
	Sleeve OPTION	156408620	156408630	156408640	156408650	156408660	156408670	156408680	156408690	KL13AAA	KL13AAB
	316 SS, PN 40	KL13AAC	Note. Double Sleeve Kit are without ring								
11	Shaft	165045641	165045651	165045661	165045671	165045681	165045691	165045701	165045711	165045721	165045731
	431 SS	165045741									
31	Tie rods kit SVF	KL22AAE	KL22AAF	KL22AAG	KL22AAH	KL22AAK	KL22AAL	KL22AAM	KL22AAN	KL22AAP	KL22AAQ
		KL22AAR									

Mech seal Kit

*20	Materials ->	Q1BEGG	Q1Q1EGG	Q1BVG	Q1Q1VGG	Q1CTGG	Q1Q1TGG	
	Mech seal D22 + OR	KL01AC0	KL01AC1	KL01AC2	KL01AC3	KL01AC5	KL01AC6	STD -> Q1BEGG - OR EPDM

	Wear parts, pump body	->SV3304	->SV3309	->SV3313
	impeller stop, impeller locking	1 bearing no drum	2 bearing no drum	3 bearing no drum
*34	Wear Parts Kit	KL35AA9	KL35ABA	KL35ABC
14	Pump body PN16	151351000	151351000	151351000
29	Impeller locking	KL41AAG	KL41AAG	KL41AAG

Common, Single Unit and Kit

4	Plugs	EPDM	KL34AAF	
		FPM	KL34AAG	
		FEP	KL34AAH	
5	Seal housing plate		160150260	
6	Upper head		161453740	
7	Spring		169100190	
8	Reduced impeller		150702820	
9	Full impeller		150702840	For example. SV3303/2_4 = 3 STages = 3 Impellers: 2 Imp. Reduced, 1 Imp. Full, 4P
15	Diffuser carbon bush		152801801	304 SS
16	Last stage diffuser		152801731	304 SS
*21	OR	EPDM	KL02AAA	1-2 Sleeve With Elastomers for Drum Pumps SV33-46
		FPM	KL02AAD	
	OR	FEP	KL02AA7	Single Sleeve With Elastomers for Drum Pumps SV33-46
		FPM	KL02AAE	
	OR	FEP	KL02AA8	Double Sleeve With Elastomers for Drum Pumps SV33-46
30	Bush seal		KL41AAH	
32	Support tungsten bush SVF		KL16AAA	
*33	Diffuser tungsten bush		KL05AC6	From SV3304, included
35	Sleeve ring		168601900	For 11-12-13 STages Pumps

Motor, Coupling, Adaptor

**1		kW >	1,1	1,5	2,2	3,0	4,0
	Motor 4P, 3~ ->		107106613	50005RD00	50006RD00	50010RD00	50011RD00
2	Adaptor		161453600	161453600	161453620	161453620	161453620
26	Coupling		KL10AAA	KL10AAA	KL10AAB	KL10AAB	KL10AAB
27	Coupling guard		KL33AAA	KL33AAA	KL33AAB	KL33AAB	KL33AAB

Pump stack, EPDM

Stages >	1	2	3	4	5	6	7	8	9	10
	11	12	13							

Articles with production To be Defined, at Feb. 2007

\* Recommended spare parts - Parti di ricambio consigliate  
 \* Pièces détachées conseillées - Empfohlene Ersatzteile  
 \*\* Motor spare parts: see motor lists - Parti di ricambio motore: vedi liste motore  
 \*\* Pièces détachées Moteur : voir listes moteur - Motor-Ersatzteile: gem. Motorlisten



SV46F/P 2 Pole

Production date > Feb08

ELP 2 P, 3 ~		SV4601/1F/P	SV4601F/P	SV4602/2F/P	SV4602F/P	SV4603/2F/P	SV4603F/P	SV4604/2F/P	SV4604F/P	SV4605/2F/P	SV4605F/P
F - Version	3 ~ >	101572011	101572021	101572031	101572041	101572051	101572061	101572071	101572081	101572091	101572101
	3 ~ >	SV4606/2F220	SV4606F220T	SV4607/2F/P	SV4607F/P	SV4608/2F/P	SV4608F/P	SV4609/2F/P	SV4609F/P	SV4610/2F/P	SV4610F/P
	3 ~ >	101572111	101572121	102702131	102702141	102702151	102702161	102702171	102702181	102702191	102702201
		SV4611/2F/P	SV4611F/P	SV4612/2F/P	SV4612F/P	SV4613/2F/P	SV4613F/P				
		102702211	102702221	102702231	102702241	102702251					
Motor power	3.0	4.0	5.5	7.5	11.0	11.0	15.0	15.0	18.5	18.5	
	22.0	22.0	30.0	30.0	30.0	30.0	30.0	37.0	37.0	37.0	
	45.0	45.0	45.0	45.0	45.0						
Stages number	1	1	2	2	3	3	4	4	5	5	
	6	6	7	7	8	8	9	9	10	10	
	11	11	12	12	13						

Single Unit and Kit

10	Stages >	1	2	3	4	5	6	7	8	9	10
Sleeve STD		11	12	13							
	166441881	166441891	166441901	166441911	166441921	166441931	166441941	166441951	166441961	166441971	166441981
	KL13AAA	KL13AAB	KL13AAC	Note. Double Sleeve without ring							
Sleeve OPTION 316 SS, PN 40	156408600	156408610	156408620	156408630	156408640	156408650	156408660	156408670	156408680	156408690	
	KL13AAA	KL13AAB	KL13AAC	Note. Double Sleeve without ring							
11 Shaft 431 SS	165045621	165045631	165045641	165045651	165045661	165045671	165045681	165045691	165045701	165045711	
	165045721	165045731	165045741								
31 Tie rods kit SVF	KL22AAC	KL22AAD	KL22AAE	KL22AAF	KL22AAG	KL22AAH	KL22AAK	KL22AAL	KL22AAM	KL22AAN	
	KL22AAP	KL22AAQ	KL22AAR								

Mechanical seal kit

*20	Mech. seal D22 + OR	Materials ->	Q1BEGG	Q1Q1EGG	Q1BVG	Q1Q1VGG	Q1CTGG	Q1Q1TGG	
			KL01AC0	KL01AC1	KL01AC2	KL01AC3	KL01AC5	KL01AC6	STD -> Q1BEGG - OR EPDM

Wear parts, pump body

		->SV4603	->SV4604	->SV4609	->SV4613
drum, impeller stop, impeller locking		1 bearing no drum	1 bearing drum	2 bearing drum	3 bearing drum
*34 Wear Parts Kit		KL35ABE	KL35ABX	KL35ABG	KL35ABK
14 Pump body	PN16	151351040	-	-	-
	PN16-40	-	151351060	151351060	151351060
28 Drum	EPDM	KL41AAB	KL41AAB	KL41AAB	KL41AAB
	FPM	KL41AAE	KL41AAE	KL41AAE	KL41AAE
	FEP	KL41AAT	KL41AAT	KL41AAT	KL41AAT
29 Impeller locking		KL41AAG	-	-	-

Common, Single Unit and Kit

4 Plugs	EPDM	KL34AAF	
	FPM	KL34AAG	
	FEP	KL34AAH	
5 Seal housing plate		160150260	
6 Upper head		161453740	
7 Spring		169100190	
*8 Reduced impeller		150702830	
*9 Full impeller		150702750	Example. SV4603/2 = 3 Stages = 3 Impellers: 2 Imp. Reduced, 1 Imp. Full
15 Diffuser carbon bush		152801811	304 SS
16 Last stage diffuser		152801731	304 SS
*21 OR	EPDM	KL02AAA	1-2 Sleeve With Elastomers for Drum Pumps SV33-46
	FPM	KL02AAD	
	FEP	KL02AA7	Single Sleeve With Elastomers for Drum Pumps SV33-46
	FPM	KL02AAE	
	FEP	KL02AA8	Double Sleeve With Elastomers for Drum Pumps SV33-46
30 Bush seal		KL41AAH	
32 Support tungsten bush SVF		KL16AAB	
*33 Diffuser tungsten bush		KL05AC7	From SV4605, included
35 Sleeve ring		168601900	For 11-12-13 Stages Double Sleeve Pumps

Motor, Single Unit and Kit

**1	Motor power >	3.0	4.0	5.5	7.5	11.0	15.0	18.5	22.0	30.0	37.0
	kW >	45.0									
2	Adaptor	50002RF00	50008VG00	50013VE00	50017VB00	50019VE00	50024VB00	50025VB00	50026VE00	130643901	130643911
		130643921									
26	Coupling	KL10AAB	KL10AAB	KL10AAC	KL10AAC	KL10AAD	KL10AAD	KL10AAD	KL10AAE	KL10AAF	KL10AAF
		KL10AAF									
27	Coupling guard	KL33AAA	KL33AAA	KL33AAB	KL33AAB	KL33AAC	KL33AAC	KL33AAC	KL33AAC	KL33AAC	KL33AAC
		KL33AAC									



SV46F/P 4 Pole

Production date > Feb08

ELP 4P, 3 --										
F - Version 3 -->	SV4602F4/P	SV4603F4/P	SV4604F4/P	SV4605F4/P	SV4606F4/P	SV4607F4/P	SV4608F4/P	SV4609F4/P	SV4610F4/P	SV1611F4/P
	101572541	101572561	101572581	101572601	101572621	101572641	101572661	101572681	101572701	101572721
3 -->	SV4612F4/P									
	101572741									
Motor power kW >	1,1	1,5	2,2	2,2	3,0	3,0	4,0	4,0	5,5	5,5
	5,5									
Stages number >	2	3	4	5	6	7	8	9	10	11
	12									

Single Unit and Kit

	Stages >	2	3	4	5	6	7	8	9	10	11
10		12									
Sleeve STD		166441891	166441901	166441911	166441921	166441931	166441941	166441951	166441961	166441971	KL13AAD
		KL13AAE	Note. Double Sleeve pump without ring								
Sleeve OPTION 316 SS, PN 40		156408610	156408620	156408630	156408640	156408650	156408660	156408670	156408680	156408690	KL13AAA
		KL13AAB	Note. Double Sleeve pump without ring								
11 Shaft 431 SS		165045631	165045641	165045651	165045661	165045671	165045681	165045691	165045701	165045711	165045721
		165045731									
31 Tie rods kit SVF		KL22AAD	KL22AAE	KL22AAF	KL22AAG	KL22AAH	KL22AAK	KL22AAL	KL22AAM	KL22AAN	KL22AAP
		KL22AAQ									

Mechanical seal kit

*20	Materials ->	Q1BEGG	Q1Q1EGG	Q1BVGG	Q1Q1VGG	Q1CTGG	Q1Q1TGG			
	Mech. seal D22 + OR	KL01AC0	KL01AC1	KL01AC2	KL01AC3	KL01AC5	KL01AC6	STD -> Q1BEGG - OR EPDM		

Wear parts, pump body		->SV4604	->SV4609	->SV4612
impeller halt, impeller locking		1 bearing no drum	2 bearing no drum	3 bearing no drum
*34	Wear Parts Kit	KL35ABE	KL35ABF	KL35ABH
14	Pump body PN16	151351060	151351060	151351060
29	Impeller locking	KL41AAG	KL41AAG	KL41AAG

Common, Single Unit and Kit

4	Plugs	EPDM	KL34AAF		
		FPM	KL34AAG		
		FEP	KL34AAH		
5	Seal housing plate	160150260			
6	Upper head	161453740			
7	Spring	169100190			
8	Reduced impeller	150702830			
9	Full impeller	150702750	For example. SV4603_4 = 3 Stages = 3 Impellers: No Imp. Reduced, 3 Imp. Full, 4P		
15	Diffuser carbon bush	152801811	304 SS		
16	Last stage diffuser	152801731	304 SS		
*21	OR	EPDM	KL02AAA	1-2 Sleeve With Elastomers for Drum Pumps SV33-46	
		FPM	KL02AAD		
	OR	FEP	KL02AA7	Single Sleeve With Elastomers for Drum Pumps SV33-46	
		FPM	KL02AAE		
	FEP	KL02AA8	Double Sleeve With Elastomers for Drum Pumps SV33-46		
30	Bush seal	KL41AAH			
32	Support tungsten bush SVF	KL16AAB			
*33	Diffuser tungsten bush	KL05AC7	From SV4605, included		
35	Sleeve ring	168601900	For 11-12 Stages Double Sleeve Pumps		

Motor, Single Unit and Kit

**1	Mot. power, kW	1,1	1,5	2,2	3,0	4,0	5,5
	Motor 4P ->	50005RD00	50006RD00	50010RD00	50011RD00	50015VD00	50020VB00
2	Adaptor	161453600	161453600	161453620	161453620	161453620	161453640
26	Coupling	KL10AAA	KL10AAB	KL10AAB	KL10AAC	KL10AAC	KL10AAC
27	Coupling guard	KL33AAA	KL33AAB	KL33AAB	KL33AAC	KL33AAC	KL33AAC

Pump stack, EPDM

Stages >	1	2	3	4	5	6	7	8	9	10
	11	12	13	Articles with production To be Defined, at Feb. 2007						

\* Recommended spare parts - Parti di ricambio consigliate

\* Pièces détachées conseillées - Empfohlene Ersatzteile

\*\* Motor spare parts: see motor lists - Parti di ricambio motore: vedi liste motore

\*\* Pièces détachées Moteur : voir listes moteur - Motor-Ersatzteile: gem. Motorlisten

SV33-92F\_5\_P\_Feb08\_EdA



SV66F/P 2 Pole

Production date > Feb08

ELP 2 P, 3 ~											
F - Version	3 ~>	SV6601/1F/P	SV6601F/P	SV6602/2F/P	SV6602/1F/P	SV6602F/P	SV6603/2F/P	SV6603/1F/P	SV6603F/P	SV6604/2F/P	SV6604/1F/P
		101574011	101574021	101574031	101574041	101574051	101574061	101574071	101574081	101574091	101574101
	3 ~>	SV6604F/P	SV6605/2F	SV6605/1F	SV6605F	SV6606/2F	SV6606/1F	SV6606F	SV6607/2F	SV6607/1F	SV6607F
		101574111	102704121	102704131	102704141	102704151	102704161	102704171	102704181	102704191	102704201
Motor power kW >	3 ~>	SV6608/2F	SV6608/1F	SV6608F							
		102704211	102704221	102704231							
		4.0	5.5	7.5	11.0	11.0	15.0	15.0	18.5	18.5	22.0
		22.0	30.0	30.0	30.0	30.0	37.0	37.0	37.0	45.0	
		45.0	45.0	45.0							
Stages number		1	1	2	2	2	3	3	3	4	4
		4	5	5	5	6	6	6	7	7	7
		8	8	8							

Single Unit and Kit

10	Stages >	1	2	3	4	5	6	7	8	
	Sleeve STD	166442081	166442091	166442101	166442111	166442121	166442131	166442141	166442151	
	Sleeve OPTION	156408750	156408760	156408770	156408780	156408790	156408800	156408810	156408820	316 SS, PN40
11	Shaft	165045781	165045791	165045801	165045811	165045821	165045831	165045841	165045851	431 SS
31	Tie rods kit SVF	KL22AA5	KL22AA6	KL22AA7	KL22AA8	KL22AAH	KL22AA9	KL22ABA	KL22ABB	

Mechanical seal Kit

*20	Materials ->	Q1BEGG	Q1Q1EGG	Q1BVGG	Q1Q1VGG	Q1CTGG	Q1Q1TGG	
	Mech. seal D22 + OR	KL01AC0	KL01AC1	KL01AC2	KL01AC3	KL01AC5	KL01AC6	STD -> Q1BEGG - OR EPDM

Wear parts, pump body drum, impeller stop, impeller locking

		->SV6602	->SV6603	->SV6606	->SV6608
		1 bearing no drum	1 bearing drum	2 bearing drum	3 bearing drum
*34	Wear Parts kit	KL35ABL	KL35ABY	KL35ABN	KL35ABQ
14	Pump body	PN16 151351080	151351100	151351100	-
		PN 25	-	-	151351130
28	Drum	EPDM	-	KL41AAC	KL41AAC
		FPM	-	KL41AAF	KL41AAF
		FEP	-	KL41AAU	KL41AAU
29	Impeller locking	KL41AAG	-	-	-

Common, Single Unit and Kit

4	Plugs	EPDM	KL34AAF	
		FPM	KL34AAG	
		FEP	KL34AAH	
5	Seal housing plate		160150260	
6	Upper head		161453760	
7	Spring		169100210	
*8	Reduced impeller		150702840	
*9	Full impeller		150702760	Example. SV6603/2 = 3 STages = 3 Impellers: 2 Imp. Reduced, 1 Imp. Full
15	Diffuser carbon bush		152801821	304 SS
16	Last stage diffuser		152801751	304 SS
*21	OR	EPDM	KL02AAC	
		FPM	KL02AAF	
		FEP	KL02AA9	
30	Bush seal		KL41AAH	
32	Support tungsten bush SVF		KL16AAC	
*33	Diffuser tungsten bush		KL05AC8	From SV6604, included

Motor, Coupling, Motor Adaptor

**1	kW >	4.0	5.5	7.5	11.0	15.0	18.5	22.0	30.0	37.0	45.0
	Motor 2P, 3 ~>	50008V000	50013VE00	50017V000	50019VE00	50024V000	50025V000	50026VE00	130643901	130643911	130643921
2	Adaptor	161453620	161453640	161453640	161453660	161453660	161453660	161453660	161453680	161453680	161453700
26	Coupling	KL10AAB	KL10AAC	KL10AAC	KL10AAD	KL10AAD	KL10AAD	KL10AAE	KL10AAF	KL10AAF	KL10AAF
27	Coupling guard	KL33AAA	KL33AAB	KL33AAB	KL33AAC	KL33AAC	KL33AAC	KL33AAC	KL33AAC	KL33AAC	KL33AAC

- \* Recommended spare parts
- \* Motor spare parts: see motor lists





SV66F/P 4 Pole

Production date > Feb08

ELP 4 P, 3 --								
F - Version	SV6601F4/P	SV6602F4/P	SV6603F4/P	SV6604F4/P	SV6605F4/P	SV6606F4/P	SV6607F4/P	SV6608F4/P
3 -->	101574521	101574551	101574581	101574611	101574641	101574671	101574701	101574731
Mot. power , kW ->	1,1	1,5	2,2	3,0	4,0	4,0	5,5	5,5
Stages number	1	2	3	4	5	6	7	8

Single Unit and Kit

10	Stages >	1	2	3	4	5	6	7	8	
	Sleeve STD	166442081	166442091	166442101	166442111	166442121	166442131	166442141	166442151	
	Sleeve OPTION	156408750	156408760	156408770	156408780	156408790	156408800	156408810	156408820	316SS , PN40
11	Shaft	165045781	165045791	165045801	165045811	165045821	165045831	165045841	165045851	431SS
31	Tie rods kit SVF	KL22AA5	KL22AA6	KL22AA7	KL22AA8	KL22AAH	KL22AA9	KL22ABA	KL22ABB	

Mechanical seal Kit

*20	Materials ->	Q1BEGG	Q1Q1EGG	Q1BVGG	Q1Q1VGG	Q1CTGG	Q1Q1TGG	
	Mech. seal D22 + OR	KL01AC0	KL01AC1	KL01AC2	KL01AC3	KL01AC5	KL01AC6	STD -> Q1BEGG - OR EPDM

Wear parts, pump body impeller stop, impeller locking

	->SV6603	->SV6606	->SV6608
	1 bearing no drum	2 bearing no drum	3 bearing no drum
*34	Wear parts kit	KL35ABL	KL35ABM
14	Pump body	PN16	151351080
29	Impeller locking	KL41AAG	KL41AAG

Common, Single Unit and Kit

4	Plugs	EPDM	KL34AAF	
		FPM	KL34AAG	
		FEP	KL34AAH	
5	Seal housing plate		160150260	
6	Upper head		161453760	
7	Spring		169100210	
8	Reduced impeller		150702840	
9	Full impeller		150702760	For example. SV6603 4 = 3 Stages = 3 Impellers: No Imp. Reduced, 3 Imp. Full, 4P
15	Diffuser carbon bush		152801821	304SS
16	Last stage diffuser		152801751	304SS
*21	OR	EPDM	KL02AAC	
		FPM	KL02AAF	
		FEP	KL02AA9	
30	Bush seal		KL41AAH	
32	Support tungsten bush SVF		KL16AAC	
*33	Diffuser tungsten bush		KL05AC8	From SV6604, included

Motor, Coupling, Motor Adaptor

**1	kW >	1,1	1,5	2,2	3,0	4,0	5,5
	Motor 4P, 3-->	50005RD00	50006RD00	50010RD00	50011RD00	50015VD00	50020VB00
2	Adaptor	161453600	161453600	161453620	161453620	161453620	161453640
26	Coupling	KL10AAA	KL10AAA	KL10AAB	KL10AAB	KL10AAB	KL10AAC
27	Coupling guard	KL33AAA	KL33AAA	KL33AAB	KL33AAB	KL33AAB	KL33AAC

Pump stack, EPDM

Stages >	1	2	3	4	5	6	7	8
----------	---	---	---	---	---	---	---	---

Articles with production to Be Defined at February 2007

\* Recommended spare parts - Parti di ricambio consigliate

\* Pièces détachées conseillées - Empfohlene Ersatzteile

\*\* Motor spare parts: see motor lists - Parti di ricambio motore: vedi liste motore

\*\* Pièces détachées Moteur : voir listes moteur - Motor-Ersatzteile: gem. Motorlisten



SV92F/P 2 Pole

Production date > Feb08

ELP 2 P, 3 ~										
F - Version	SV9201/1F/P	SV9201F/P	SV9202/2F/P	SV9202F/P	SV9203/2F/P	SV9203F/P	SV9204/2F	SV9204F	SV9205/2F	SV9205F
3 ~ >	101576011	101576021	101576031	101576041	101576051	101576061	102706071	102706081	102706091	102706101
	SV9206/2F	SV9206F	SV9207/2F							
3 ~ >	102706111	102706121	102706131							
Motor power	5.5	7.5	11.0	15.0	18.5	22.0	30.0	30.0	37.0	37.0
kW >	45.0	45.0	45.0							
Stages Number	1	1	2	2	3	3	4	4	5	5
	6	6	7							

Single Unit and Kit

10	Stages >	1	2	3	4	5	6	7	
	Sleeve STD	166442081	166442091	166442101	166442111	166442121	166442131	166442141	
	Sleeve OPTION	156408750	156408760	156408770	156408780	156408790	156408800	156408810	316SS, PN40
11	Shaft	165045781	165045791	165045801	165045811	165045821	165045831	165045841	431SS
31	Tie rods kit SVF	KL22AA5	KL22AA6	KL22AA7	KL22AA8	KL22AAH	KL22AA9	KL22ABA	

Mechanical seal Kit

*20	Materials ->	Q1BEGG	Q1Q1EGG	Q1BVGG	Q1Q1VGG	Q1CTGG	Q1Q1TGG	
	Mech. seal D22 + OR	KL01AC0	KL01AC1	KL01AC2	KL01AC3	KL01AC5	KL01AC6	STD -> Q1BEGG - OR EPDM

Wear parts, pump body drum, impeller stop, impeller locking

		->SV9202	->SV9203	->SV9204	->SV9207
		1 bearing no drum	1 bearing drum	2 bearing drum	3 bearing drum
*34	Wear parts Kit	KL35ABR	KL35ABZ	KL35ABT	KL35ABV
14	Pump body	PN16	151351080	151351100	151351100
		PN25	-	-	151351130
28	Drum	EPDM	KL41AAC	KL41AAC	KL41AAC
		FPM	KL41AAF	KL41AAF	KL41AAF
		FEP	KL41AAU	KL41AAU	KL41AAU
29	Impeller locking	KL41AAG	-	-	-

Common, Single Unit and Kit

4	Plugs	EPDM	KL34AAF	
		FPM	KL34AAG	
		FEP	KL34AAH	
5	Seal housing plate		160150260	
6	Upper head		161453760	
7	Spring		169100210	
*8	Reduced impeller		150702850	
*9	Full impeller		150702770	Example. SV9203/2 = 3 Stages = 3 Impellers: 2 Imp. Reduced, 1 Imp. Full
15	Diffuser carbon bush		152801831	304SS
16	Last stage diffuser		152801751	304SS
*21	OR	EPDM	KL02AAC	
		FPM	KL02AAF	
		FEP	KL02AA9	
30	Bush seal		KL41AAH	
32	Support tungsten bush SVF		KL16AAD	
*33	Diffuser tungsten bush		KL05AC9	From SV9204, included

Motor, Coupling, Motor Adaptor

**1	kW ->	5.5	7.5	11.0	15.0	18.5	22.0	30.0	37.0	45.0
	Mot. 2P, 3~ ->	50013VE00	50017VB00	50019VE00	50024VB00	50025VB00	50026VE00	130643901	130643911	130643921
2	Adaptor	161453640	161453640	161453660	161453660	161453660	161453660	161453680	161453680	161453700
26	Coupling	KL10AAC	KL10AAC	KL10AAD	KL10AAD	KL10AAD	KL10AAE	KL10AAF	KL10AAF	KL10AAF
27	Coupling guard	KL33AAB	KL33AAB	KL33AAC	KL33AAC	KL33AAC	KL33AAC	KL33AAC	KL33AAC	KL33AAC

\* Recommended spares  
\* Motor spares: see motor lists



SV92F/P 4 Pole

Production date > Feb08

ELP 4 P, 3 ~	SV9201F4/P	SV9202F4/P	SV9203F4/P	SV9204F4/P	SV9205F4/P	SV9206F4/P	SV9207F4/P	SV9208F4/P
F - Version 3 ~ >	101576521	101576551	101576581	101576611	101576641	101576671	101576701	101576731
Mot. power, kW >	1,1	2,2	3,0	4,0	5,5	5,5	7,5	7,5
Stages Number >	1	2	3	4	5	6	7	8

Single Unit and Kit

10	Stages >	1	2	3	4	5	6	7	8	
Sleeve STD		166442081	166442091	166442101	166442111	166442121	166442131	166442141	166442151	
Sleeve OPTION		156408750	156408760	156408770	156408780	156408790	156408800	156408810	156408820	316SS, PN40
11 Shaft		165045781	165045791	165045801	165045811	165045821	165045831	165045841	165045851	431SS
31 Tie rods kit SVF		KL22AA5	KL22AA6	KL22AA7	KL22AA8	KL22AAH	KL22AA9	KL22ABA	KL22ABB	

Mechanical seal Kit

*20	Materials ->	Q1BEGG	Q1Q1EGG	Q1BVGG	Q1Q1VGG	Q1CTGG	Q1Q1TGG	
Mech. seal D22 + OR		KL01AC0	KL01AC1	KL01AC2	KL01AC3	KL01AC5	KL01AC6	STD -> Q1BEGG - OR EPDM

Wear parts, pump body  
impeller stop, impeller locking

		-> SV9203	-> SV9206	-> SV9208
		1 bearing no drum	2 bearing no drum	3 bearing no drum
*34 Wear parts Kit		KL35ABR	KL35ABS	KL35ABU
14 Pump body	PN16	151351080	151351080	151351080
29 Impeller locking		KL41AAG	KL41AAG	KL41AAG

Common, Single Unit and Kit

4	Plugs	EPDM	KL34AAF	
		FPM	KL34AAG	
		FEP	KL34AAH	
5	Seal housing plate		160150260	
6	Upper head		161453760	
7	Spring		169100210	
8	Reduced impeller		150702850	
9	Full impeller		150702770	For example. SV9203_4 = 3 Stages = 3 Impellers: No Imp. Reduced, 4 Imp. Full, 4P
15	Diffuser carbon bush		152801831	304 SS
16	Last stage diffuser		152801751	304 SS
*21	OR	EPDM	KL02AAC	
		FPM	KL02AAF	
		FEP	KL02AA9	
30	Bush seal		KL41AAH	
32	Support tungsten bush SVF		KL16AAD	
*33	Diffuser tungsten bush		KL05AC9	From SV9204, included

Motor, Coupling, Motor Adaptor

**1	kW ->	1,1	2,2	3,0	4,0	5,5	7,5
	Mot. 4P, 3~ ->	50005RD00	50010RD00	50011RD00	50015VD00	50020VB00	50021VB00
2	Adaptor	161453600	161453620	161453620	161453620	161453640	161453640
26	Coupling	KL10AAB	KL10AAB	KL10AAB	KL10AAB	KL10AAC	KL10AAC
27	Coupling guard	KL33AAB	KL33AAB	KL33AAB	KL33AAB	KL33AAC	KL33AAC

Pump stack, EPDM

Stages >	1	2	3	4	5	6	7	8
----------	---	---	---	---	---	---	---	---

Articles with production to Be Defined at February 2007

\* Recommended spare parts - Parti di ricambio consigliate

\* Pièces détachées conseillées - Empfohlene Ersatzteile

\*\* Motor spare parts: see motor lists - Parti di ricambio motore: vedi liste motore

\*\* Pièces détachées Moteur : voir listes moteur - Motor-Ersatzteile: gem. Motorlisten

SV33-92F\_5\_P\_Feb08\_EdA

Одговор наручиоца

Наш захтев се односи на "Спроводно коло" у Вашем каталогу позиција 33.  
Позиције 15 и 16 у Вашем каталогу се односе на "предколо" и "заколо".

**ЈП "Водовод и канализација"**

**Лозница**

**Председник комисије**

**Милутин Ковачевић, дипл.маш.инж.**

**Службеник за ЈН**

**Јелена Аврамовић**